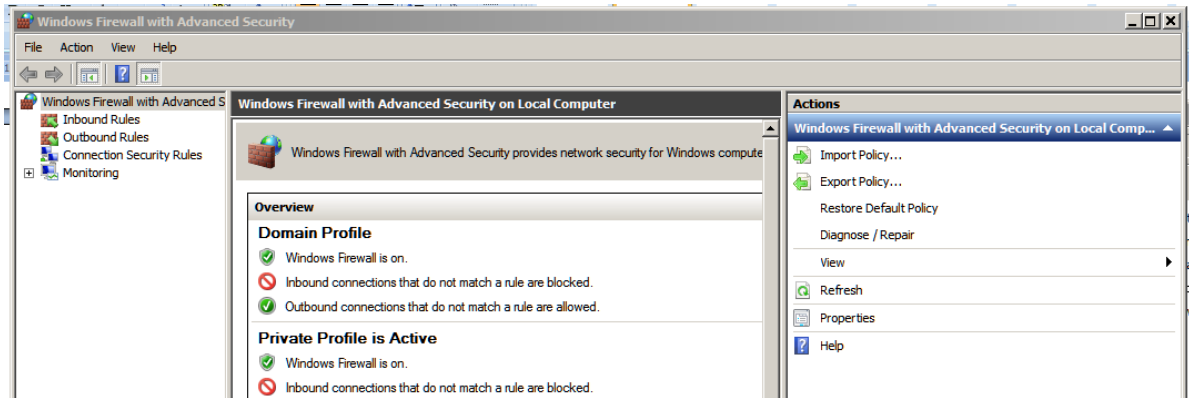


Windows 7 Firewall Settings for Site-to-Site File and Printer Sharing

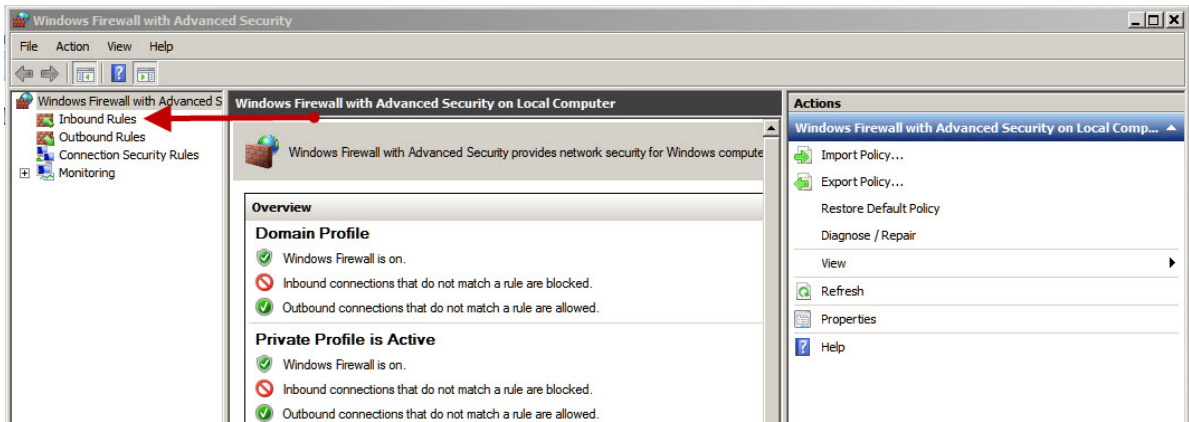
Shorthand List:

<i>File and Printer Sharing (LLMNR-UDP-In)</i>	<i>Private</i>
<i>File and Printer Sharing (NB-Datagram-In)</i>	<i>Private</i>
<i>File and Printer Sharing (NB-Name-In)</i>	<i>Private</i>
<i>File and Printer Sharing (NB-Session-In)</i>	<i>Private</i>
<i>File and Printer Sharing (SMB-In)</i>	<i>Private</i>

Step 1 Open:
Control Panel /
Administrative Tools /
Windows Firewall with Advanced Security



Step 2 Select *Inbound Rules*



Step 3 Click on the Column Heading “Name” to alphabetize the names.

Scroll down the list so that all the File and Printer Sharing items are visible.

Step 4 Highlight File and Printer Sharing (LLMNR-UDP-In) with

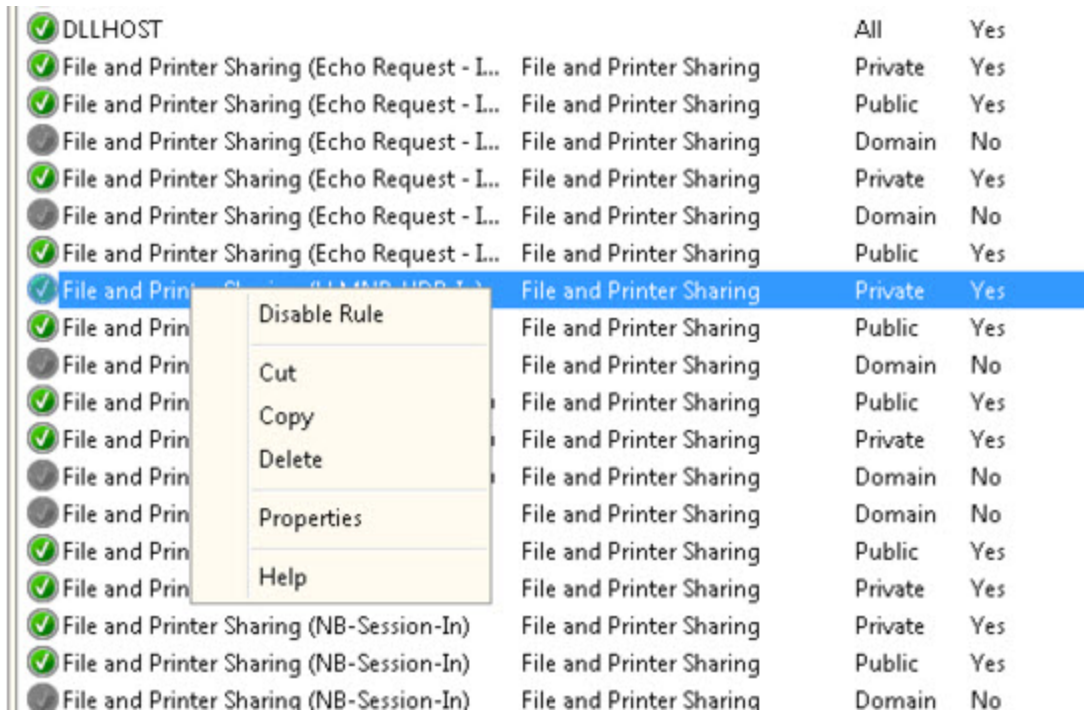
Profile: Private
Protocol: UPD
Local Port: 5355

Right click and select Properties

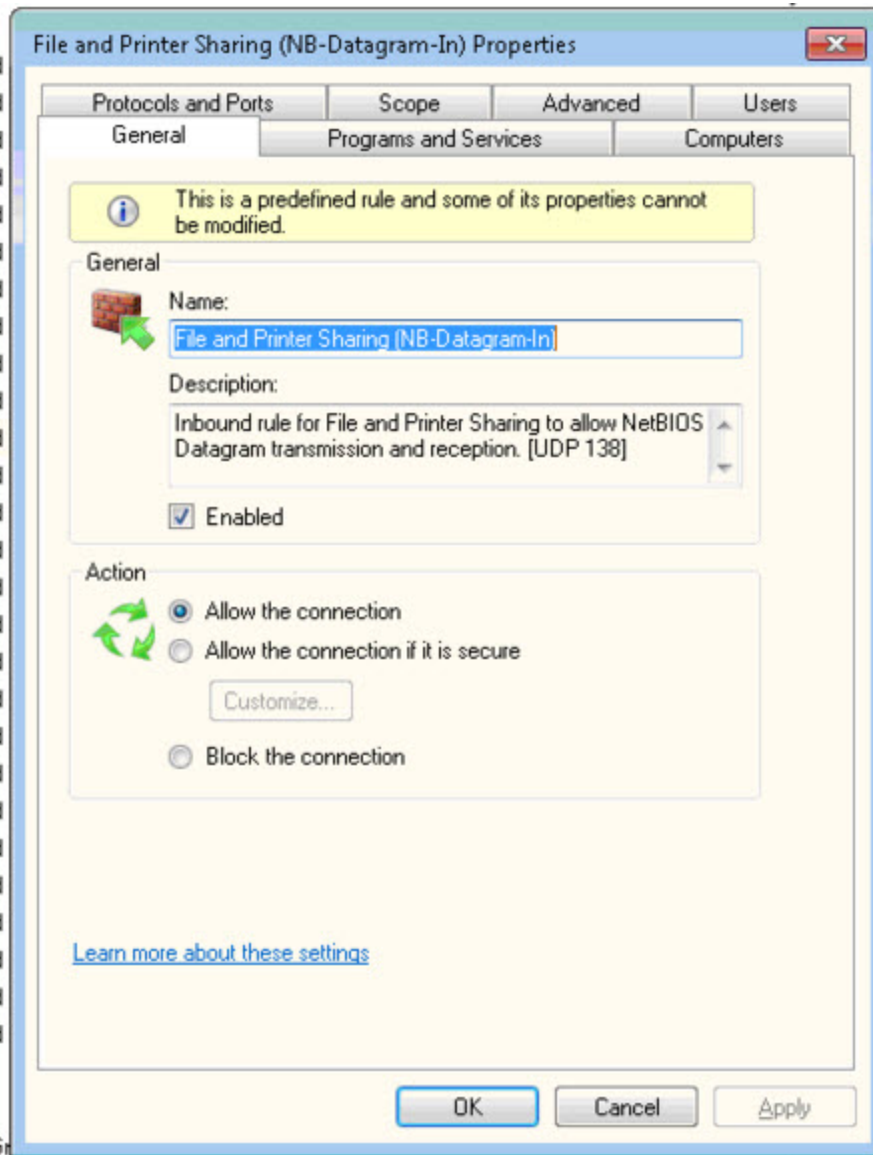
Step 5 Highlight File and Printer Sharing (LLMNR-UDP-In) with

Profile: Private
Protocol: UPD
Local Port: 5355

Right click and select Properties



Step 6 Properties Dialog



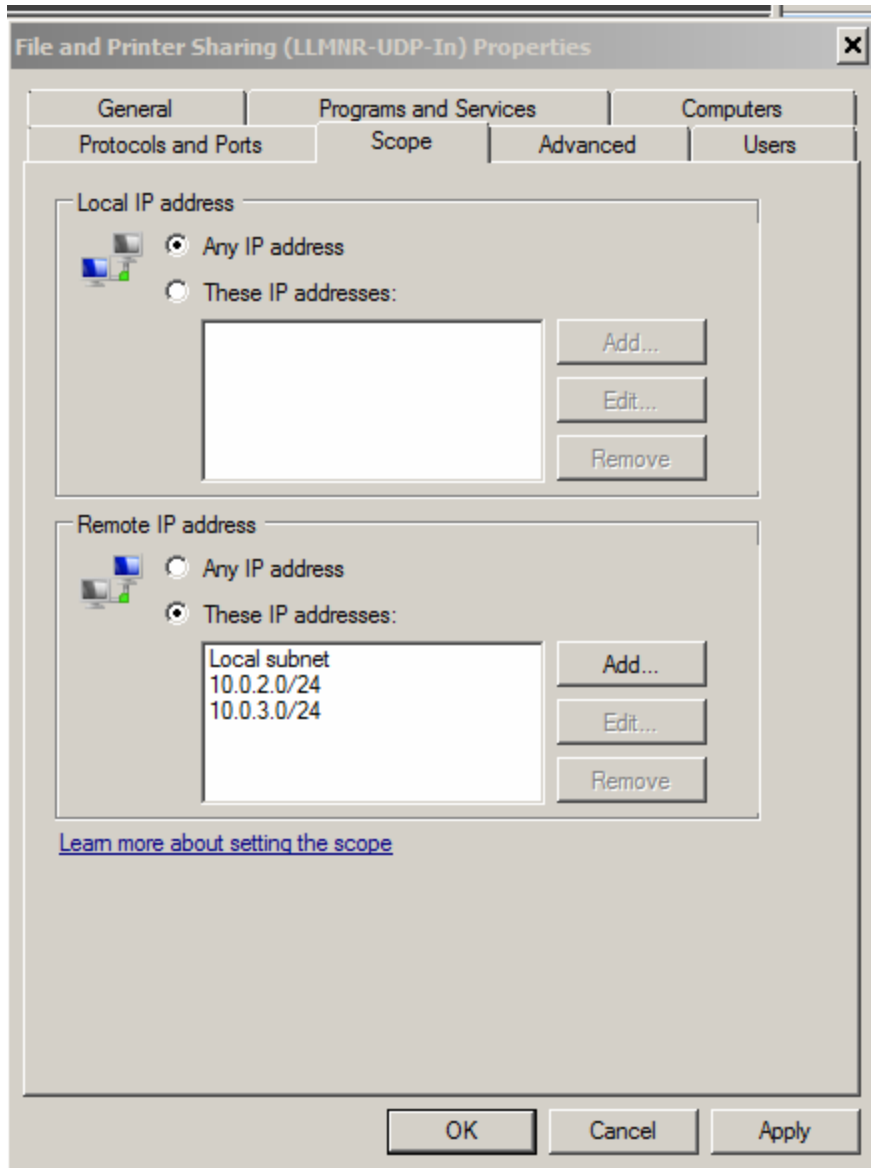
Under DESCRIPTION you should see UPD 5355.

Select the SCOPE TAB

Step 7 SCOPE Dialog

Under Remote IP address with “These IP addresses:” selected:

Click on “Add..”



NOTE: The subnets for the organization are as follows:

Site 1: 10.0.1.0/24

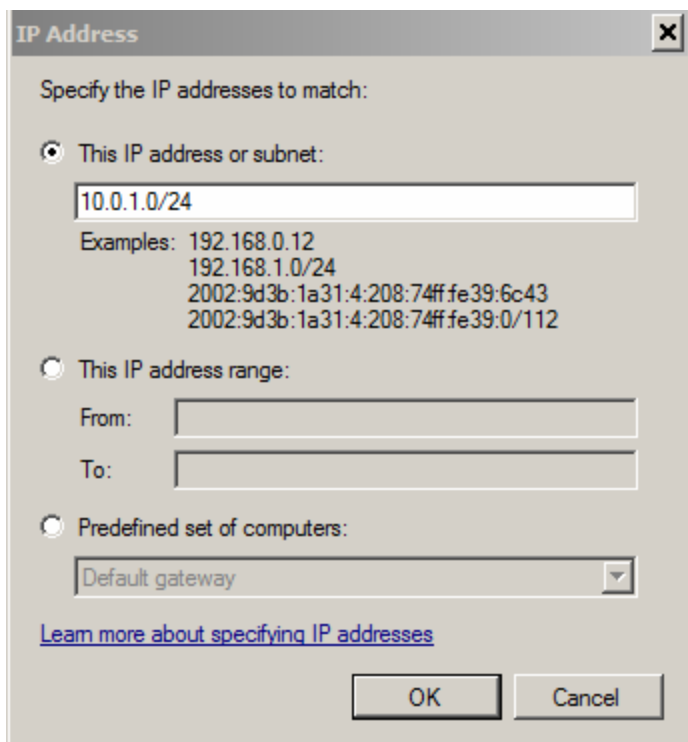
Site 2: 10.0.2.0/24

Site 3: 10.0.3.0/24

Step 8 Add one of your two *REMOTE* subnets.

That is:

- if you are in Site 1 then you will add Site 2 and Site 3.
- If you are in Site 2 then you will add Site 1 and Site 3.
- If you are in Site 3 then you will add Site 1 and Site 2.

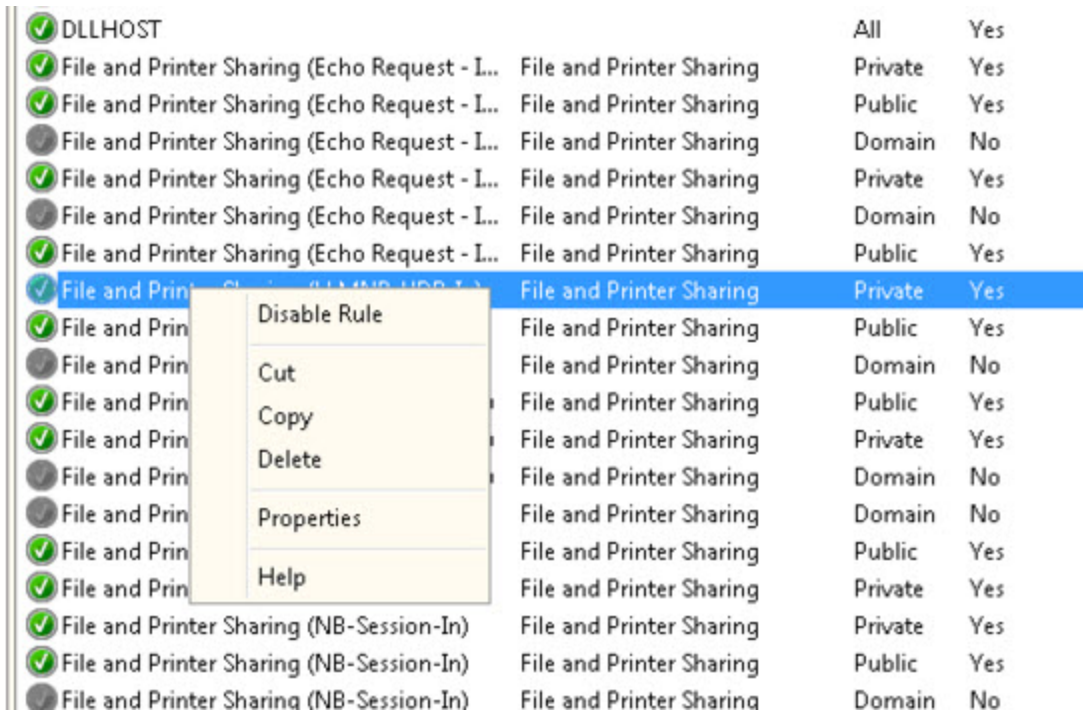


Step 9 Add the other of your two *REMOTE* subnets as above.

When you're done, the dialog should look like the one shown in Step 7 with two entries.

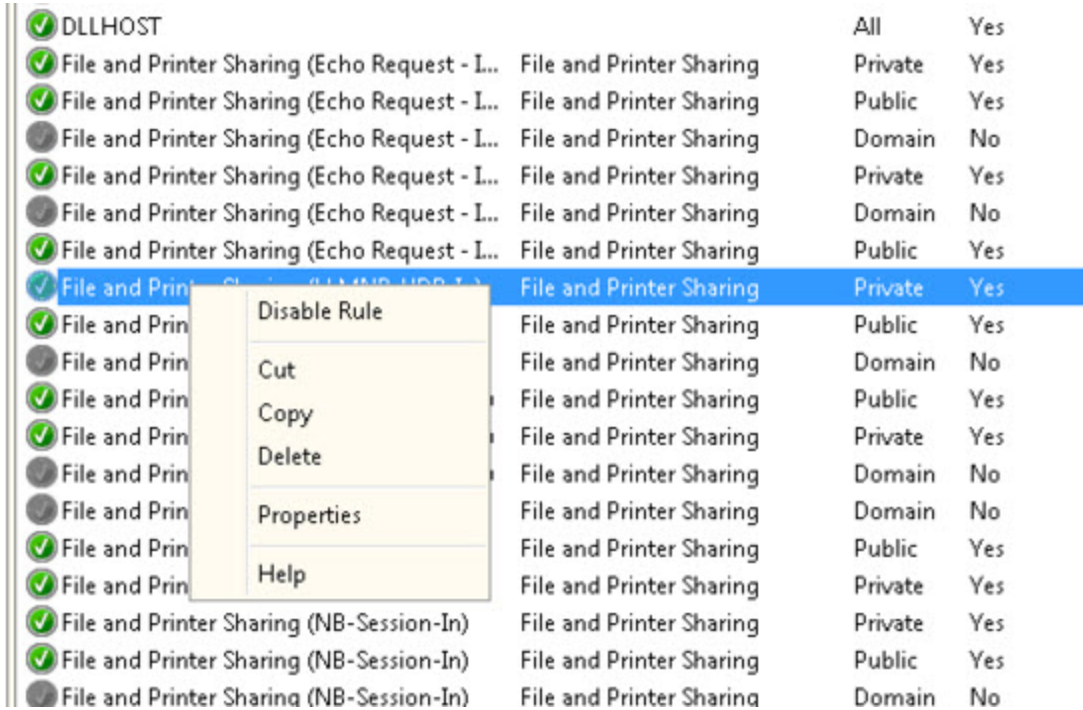
Step 10 Highlight *File and Printer Sharing (NB-Datagram-In)* with
 Profile: Private
 Protocol: UDP
 Local Port: **138**

Right click and select Properties



Step 12 Highlight *File and Printer Sharing (NB-Name-In)* with
 Profile: Private
 Protocol: UDP
 Local Port: **137**

Right click and select Properties



Step 12 Highlight *File and Printer Sharing (NB-Session-In)* with
 Profile: Private
 Protocol: TCP
 Local Port: **139**

Right click and select Properties

✓	DLLHOST		All	Yes
✓	File and Printer Sharing (Echo Request - L...	File and Printer Sharing	Private	Yes
✓	File and Printer Sharing (Echo Request - L...	File and Printer Sharing	Public	Yes
⊘	File and Printer Sharing (Echo Request - L...	File and Printer Sharing	Domain	No
✓	File and Printer Sharing (Echo Request - L...	File and Printer Sharing	Private	Yes
⊘	File and Printer Sharing (Echo Request - L...	File and Printer Sharing	Domain	No
✓	File and Printer Sharing (Echo Request - L...	File and Printer Sharing	Public	Yes
✓	File and Printer Sharing (NB-Session-In)	File and Printer Sharing	Private	Yes
✓	File and Printer Sharing (NB-Session-In)	File and Printer Sharing	Public	Yes
⊘	File and Printer Sharing (NB-Session-In)	File and Printer Sharing	Domain	No

Disable Rule
Cut
Copy
Delete
Properties
Help

Step 14 Highlight *File and Printer Sharing (SMB-In)* with
 Profile: Private
 Protocol: TCP
 Local Port: **445**

Right click and select Properties

